

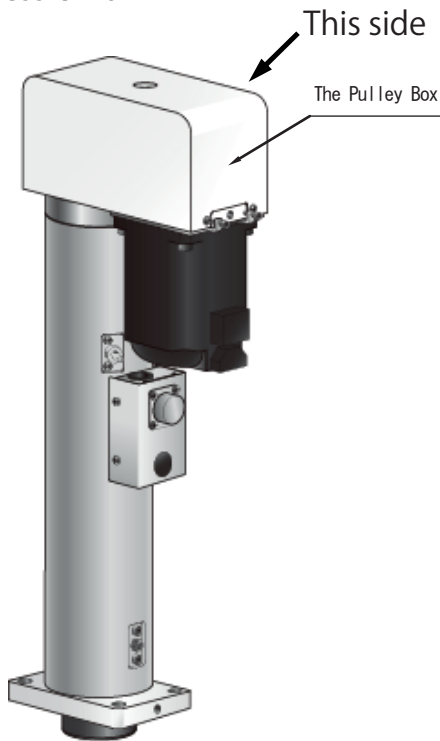
## Servo Press JP-S / JP-S2 Series

# How to Read the Model No. / Serial No.

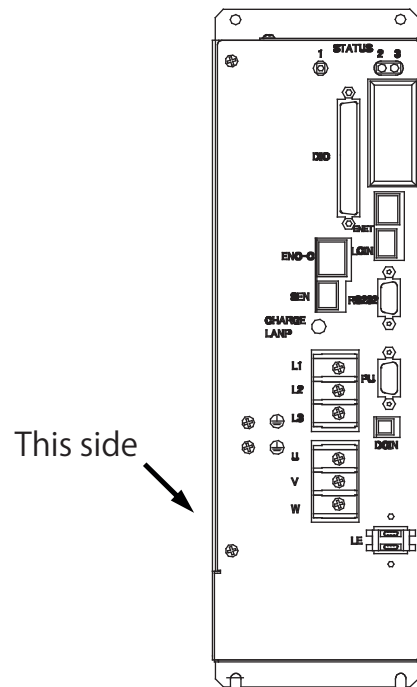
Plates are affixed to both main unit and controller. Please check both plates.

## Identification Plate Positions

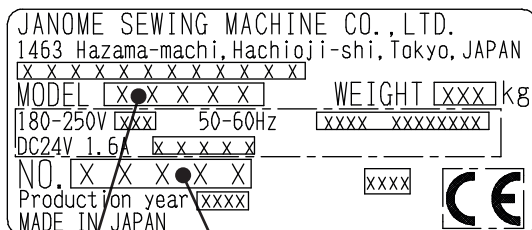
< Press Unit >



< Controller >



## How to Check the Identification Plate



① ②

① Model Number

② Serial Number

Example: 10S10000001



① ②